

Washington State Telework Pilot Project



Washington State Department of Transportation



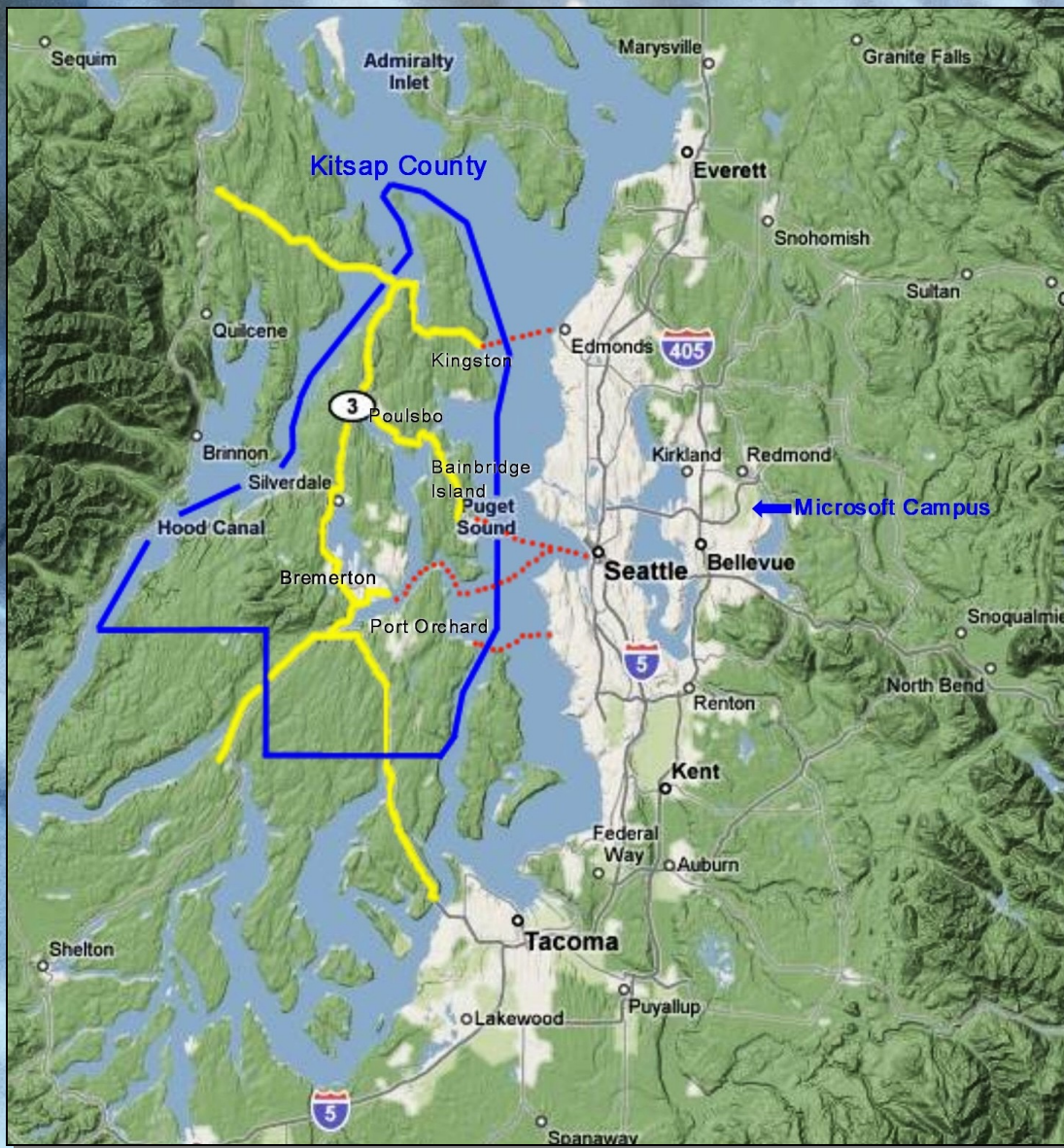
Washington State Commute Trip Reduction



Kitsap Regional Coordinating Council



www.KitsapRegionalCouncil.org/telework.html



Kitsap County

The Westside of Puget Sound

Population: 244,800
(6th highest in State)
(Density 3rd highest)

Workforce: 123,790

**Home to Naval Base
Kitsap & Puget Sound
Naval Shipyard**

**100% high-speed internet
accessible**

**Kit~Net: 120+ mile fiber-
optic backbone**

Source: Kitsap Economic
Development Alliance



www.KitsapRegionalCouncil.org/telework.html

Project Core

Deliverable: *A Telework Toolkit that any community, agency, company or other organization can use to implement a successful telework program.*

Methodology:

- *Analyze existing telework programs & toolkits*
- *Build the pilot toolkit*
- *Conduct pilot test with organizations & teleworkers*
- *Revise toolkit based on pilot test results*
- *Finalize toolkit. Deliver to State Legislature July 1, 2009*

For Employees

For Organizations

Technology

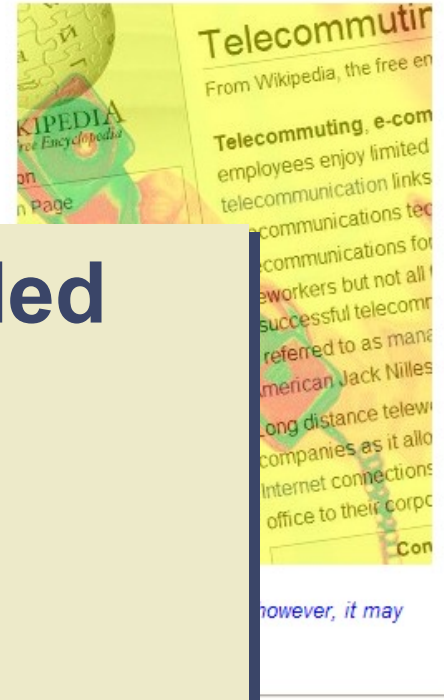
Telework Centers

Resources

Telework Toolkit Portal

This site is designed to serve two primary functions:

- It is a **mockup** of the final telework project product; a web site from which employers can both create and operate a telework



The Toolkit is a website, divided into 5 main pages

Employees

Organizations

Technology

Telework Centers

Resources



www.KitsapRegionalCouncil.org/telework.html

Exploring the Telework Option

Are you right for telework & is telework right for you?

- [Benefits of telework](#)
- [Caution! Telework isn't for everyone](#)



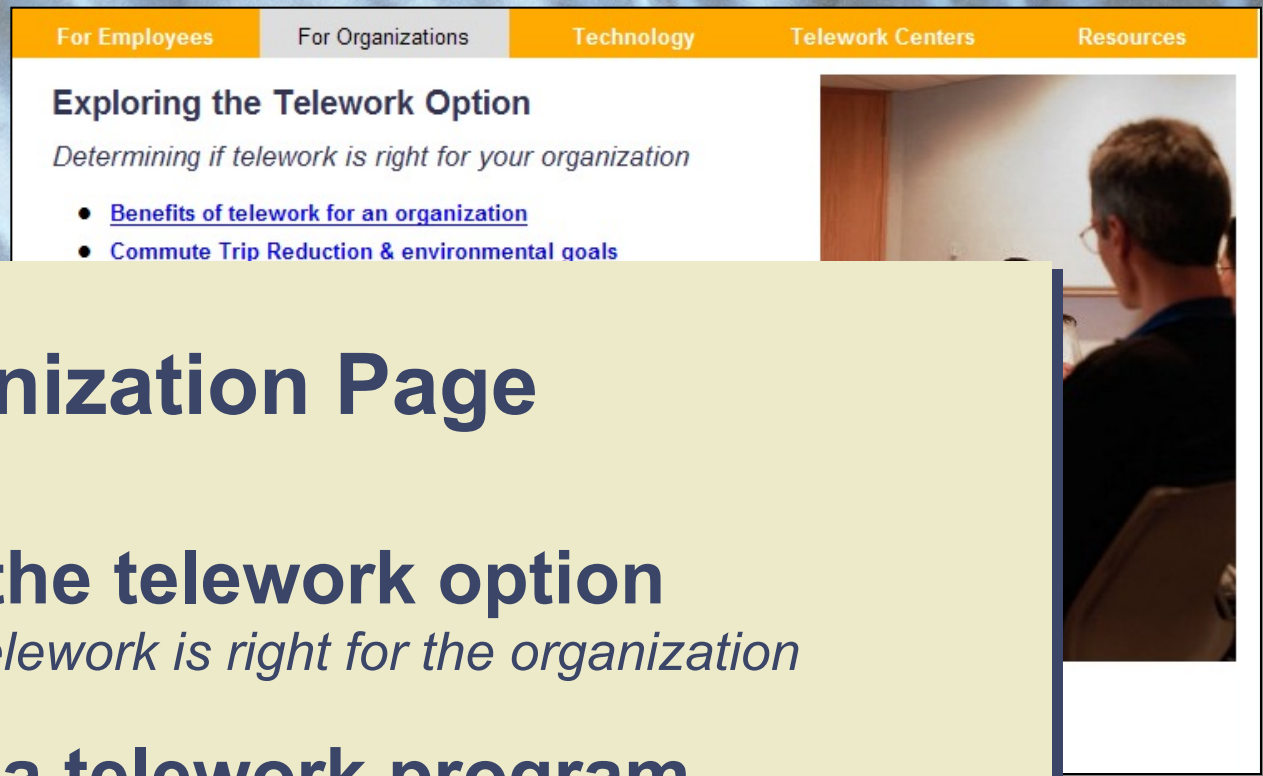
The Employee Page

Exploring the telework option

What employees need to know to decide if telework is right for them

A teleworkers manual

Advice & tools to help employees be successful teleworkers



The Organization Page

Exploring the telework option

Determining if telework is right for the organization

Setting up a telework program

Running a telework program

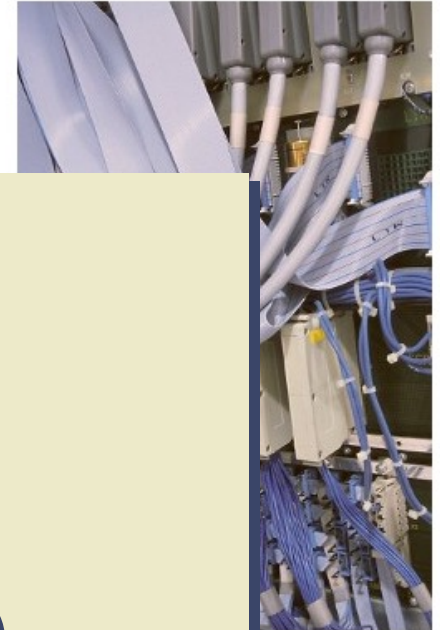
Evaluating a telework program



www.KitsapRegionalCouncil.org/telework.html

Telework IT Best Practices

- [Security & Communications](#)
- [Hardware & Software](#)
- [Telephony](#)



The Technology Page

Telework IT best practices

Technologies (*security, connectivity, hardware, storage, collaboration software*)

IT policies (*equipment policy, data security, records retention, disaster recovery/COOP*)

IT support



The Resources Page

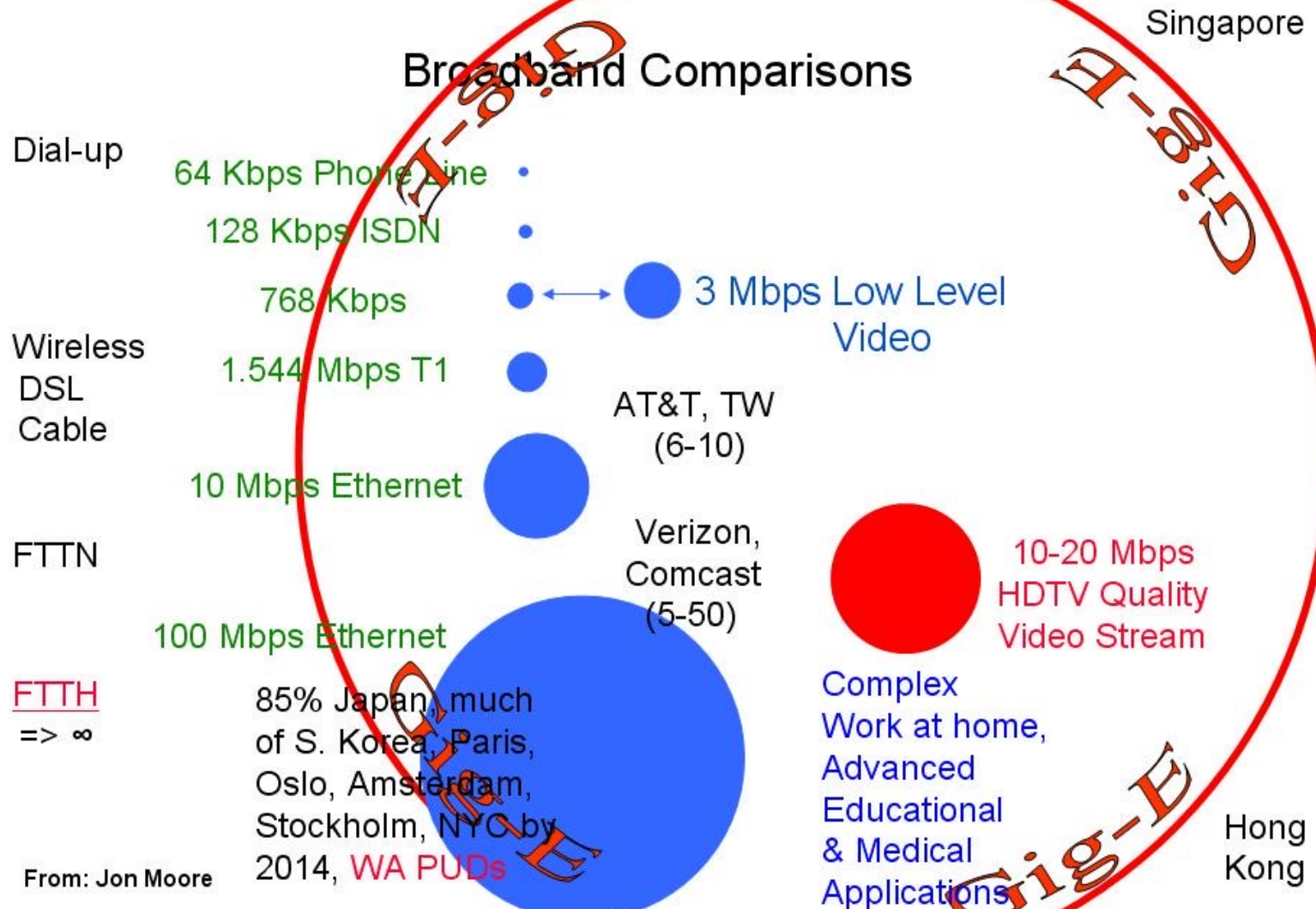
Policies *(print versions and modifiable templates)*

Forms *(print versions and modifiable templates)*

Guides

Useful links

Broadband Comparisons



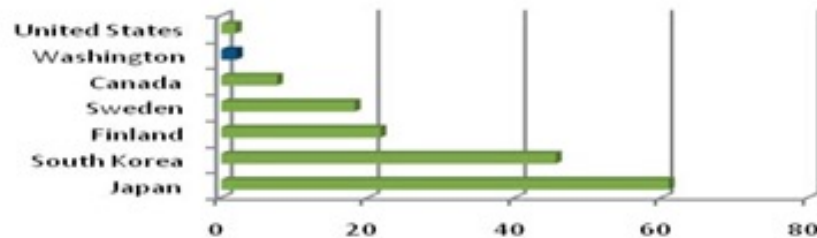
Washington Internet Speed Test

Location	Median Download Speed (megabits per second)
Japan	61.00
South Korea	45.60
Finland	21.70
Sweden	18.20
Canada	7.60
Washington	2.18
United States	1.97

International data from the Information Technology and Innovation Foundation. U.S. data from speedmatters.org test results. Most test participants had DSL or cable modem connections.

Washington Quick Stats

Median Download Speed (megabits per second)



The median upload speed in Washington is 362 kbps, about 7 times slower than in Japan.