

Recent Advances in Traffic Information & Management

Bryan Mistele, CEO



Beyond Oil Conference
September, 2008

Who We Are

The Leading Provider of Traffic Information

- Enabling **traffic, navigation, and location-based services**
- **50+ industry-leading customers** and the largest industry market share

How We Differentiate

Broadest coverage

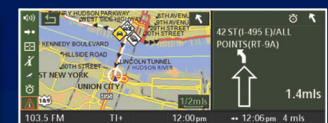
- 132+ metros of real-time flow data
- 110+ metros of real-time incident data
- 112,000+ road miles of real-time coverage in US, Canada and Europe

Highest Accuracy

- Unique fusion of traditional sensors and 800,000+ GPS-enabled vehicles

Innovative Dynamic Content

- Dynamic predictive traffic information
- New traffic-related services and solutions



The Evolution of Traffic Information

Traffic Information Is Evolving to Greater Levels of Value

Prediction & Analysis

- System-wide analysis of traffic
- Useful for planning, re-routing, analysis and decision-making

Flow Data

- Real-time speed information
- Useful for digital consumption

Incident Data

- Identifying trouble spots for consumers
- “Nuggets of usefulness”

What We Do

Aggregate Content

Smart Dust Network

Aggregate traffic & related content from >350 sources

Largest GPS Probe Network in the World

90% of Available Sensors in the US

Other Traffic Flow Sources

Traffic Incident Data

Traffic Metadata to Enable Predictions

Other Dynamic Content

Analyze & Process

Fusion Engine

Enhance data using advanced error detection advanced algorithms

Real-Time, Historical & Predictive Traffic

Traffic-Influenced Routing

Information

Applications & Alerts

Deliver Solutions

Connected Services

Distribute to customers via Connected & Broadcast Services

Automotive

Portable Navigation

Web

Mobile

Public Sector

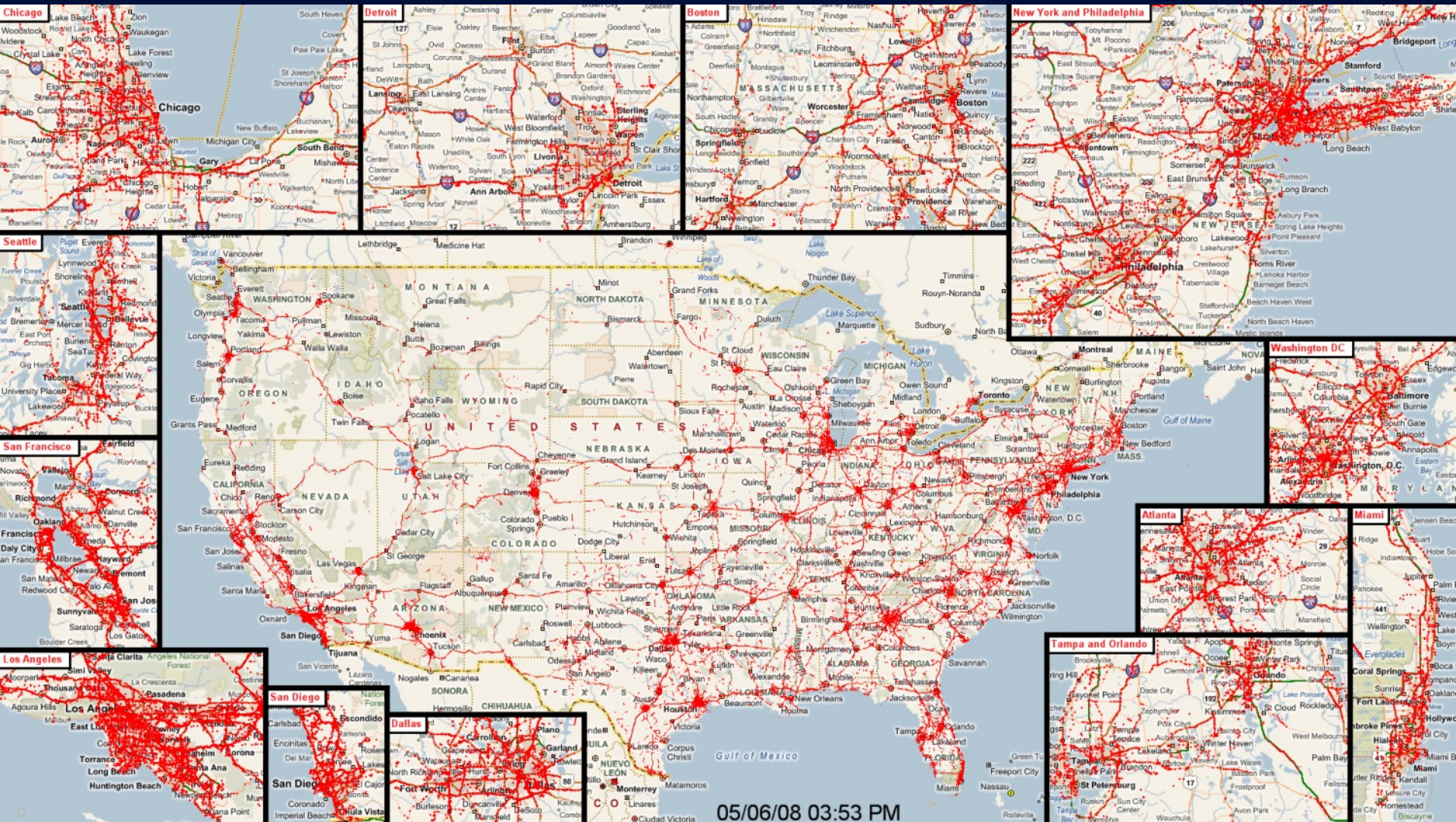
Enterprise

Fleet

Broadcast Media

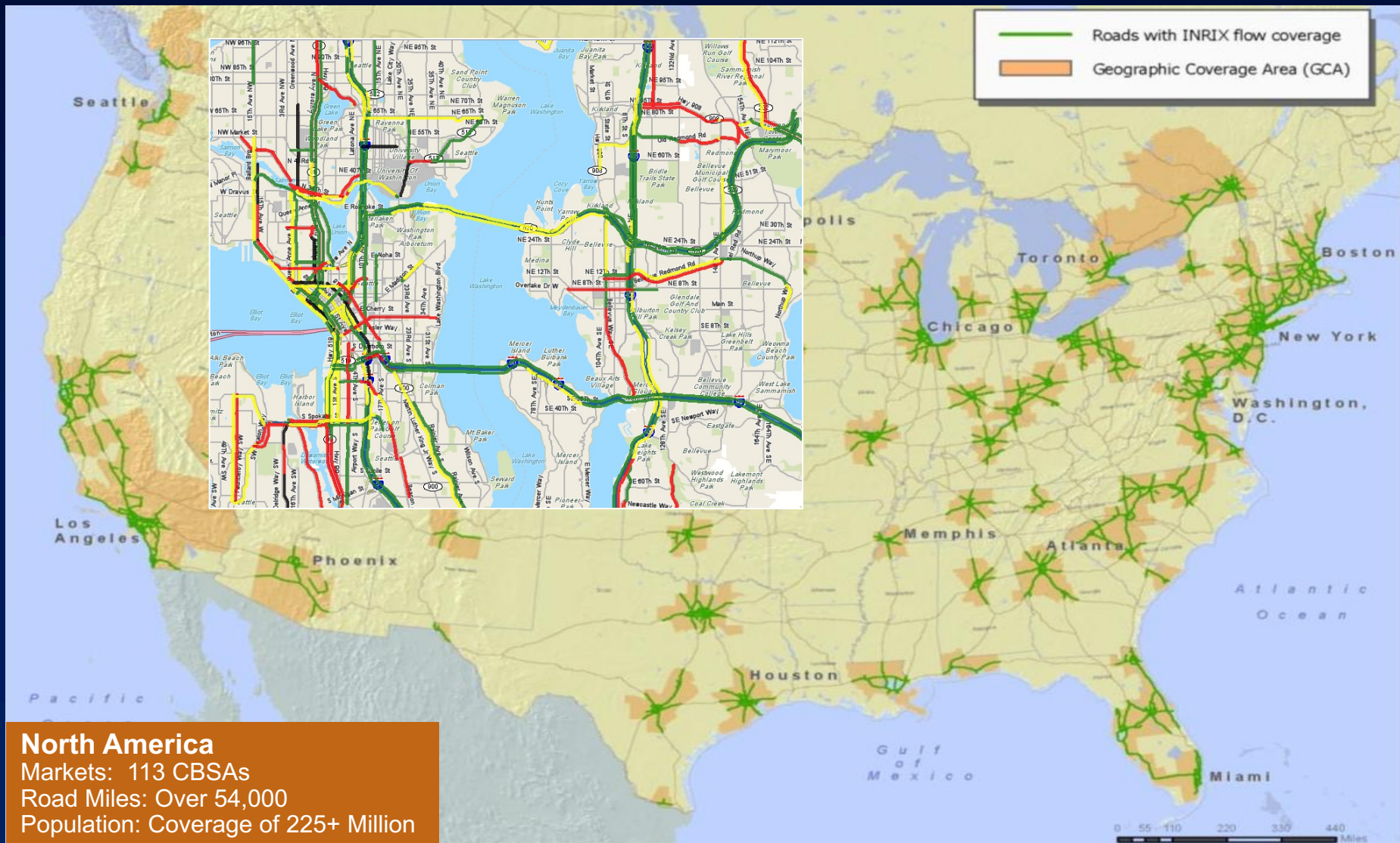
GPS Probe Network

Over 1B usable GPS data points per month, 500K every 15 minutes



INRIX Real-Time Flow Coverage

North America



INRIX Total Fusion Coverage

North America

Over 800,000 miles of freeways, highways and arterials

