

information with purpose

DISCOVERY INSTITUTE



DISCOVERY INSTITUTE

VALUES
MISSION

PURPOSE

We believe in a universe that holds purpose and meaning, that is designed for inquiry, and that affirms the inherent dignity of human beings.

CREATIVITY

We believe in the power of human creativity to expand horizons, enable discovery, and illuminate public policy.

INNOVATION

We believe that innovation from the minds of human beings offers a hopeful future of technological achievements, abundance, and economic prosperity.

MISSION

The mission of Discovery Institute is to advance a culture of *purpose, creativity, and innovation*.

The background of the entire page is a photograph of a city skyline at night, with numerous skyscrapers illuminated. The Space Needle is prominently featured on the left side. A dark blue square is positioned in the lower center, containing the white letters "DI" in a serif font, representing the Discovery Institute logo.

DI



DISCOVERY INSTITUTE

President: Steve Buri

Chairman of the Board: Bruce Chapman

Website: discovery.org

Email: info@discovery.org

INFORMED

Information is spelled out along molecular strands of DNA and in the fine-tuning of a universe brimming with stars and a privileged planet. It informs life and the universe itself.

Free economies relay countless bits of *information* between consumers and producers, harnessing human creativity and rationality, lifting billions from poverty to abundance.

Information fuels science, unboxes new technologies, and drives innovation to meet new challenges.

Evaluating and using *information*, when we are drowning in it, is vital to educating students how to flourish today.

Good *information* is essential to a citizenry that is capable of electing and serving as representatives.

We are each *formed* and endowed with ethical rights and responsibilities in this world, from conception to death.

Humans are the genuine singularities, able to create and understand *information* where artificial intelligence cannot.

Discovery co-founder George Gilder reflects: "Information theory upholds the idea of a hierarchical universe and underlies all the programs at Discovery."



INFORMING

Out of chaos and uncertainty, information charts a course. It says this instead of that. Here, not there. It has a vision of the good and true that can inform public policy for the common good. It is that without which we cannot form sentences, much less societies.

Since its founding in 1991 and its first publication — *International Seattle: Creating a Globally Competitive Community* — Discovery has sought the good of the city and country through thoughtful analysis and effective action on local, regional, national, and international issues.

The purposeless materialism of the last century has left society adrift. The Discovery Institute informs the public and shapes culture through a raft of books, podcasts, short films, online magazines, events, and seminars.

At Discovery Institute, a community of some seventy plus fellows sail boldly beyond the horizon in **economics, technology, civics, education, transportation, bioethics, artificial intelligence, and intelligent design.**

Climb aboard.



DISCOVERY INSTITUTE

FACT SHEET

1991 FOUNDED

2 OFFICES

Seattle and Redmond (hubs in Dallas and DC)

8 PROGRAMS

Discovery has eight active programs focusing in the areas of economics, homelessness, technology, government, education, transportation, bioethics, artificial intelligence, and intelligent design.

80+ SCHOLARS

In-house and full and part-time contract fellows, scholars, and policy experts discover and inform.

30+ EMPLOYEES

The work of the Institute is supported by a dedicated staff working in Seattle, Dallas, DC, and points abroad.

2021

Discovery Institute is a non-profit, non-partisan organization focused on research, education, action, and cultural renewal. Headquartered in Seattle, it brings together a growing global network of scholars, scientists, and policy experts. The Institute investigates a universe brimming with information and purpose. It has a special interest in exploring how science and technology can advance free markets, propel new discoveries, illuminate public policy, and support human dignity and the metaphysical foundations of a free society. It organizes conferences, seminars, and educational programs for both young people and adults. It produces and disseminates books, articles, reports, and a wide array of multimedia content designed to inform the public.

President: **Steve Buri**

Vice President: **John G. West**

Chairman of the Board: **Bruce Chapman**

DISCOVERY INSTITUTE

BOOKS & ARTICLES



- 9 books, **43** chapters and studies
- 24** Scholarly articles or presentations
- 21** Major research projects funded
- 342** articles in national publications
- 682** Popular-level articles (op-eds, informational)

4.5 million views on YouTube, including Human Zoos, Science Uprising, and COSM keynotes

150,000 subscribers at YouTube

3 podcasts, **200+** episodes, **985K+** downloads

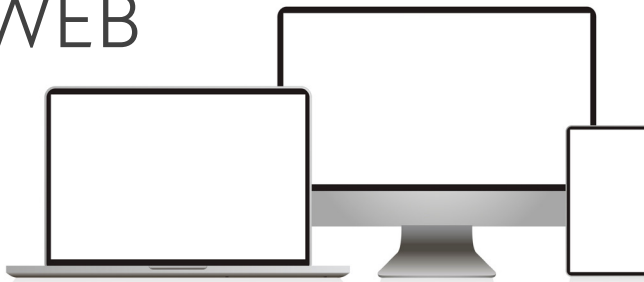
12 Nationwide TV appearances

35 Radio and podcast appearances

AUDIO & VIDEO



WEB



1900+ articles written

12 primary websites including discovery.org, evolutionnews.org, mindmatters.ai, and humanize.today

50+ promotional, topical, and event sites

3.7 million users, **8.5 million** views

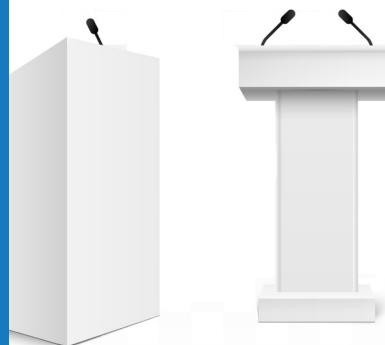
92 lectures, conferences, forums

19 countries reached

30,000+ attendance at events

129 students in summer seminars

EVENTS



SOCIAL



10.1+ million reached at Facebook

18k+ Twitter followers

67k email subscribers

CENTER FOR SCIENCE & CULTURE

discovery.org/id

MISSION

Discovery Institute's *Center for Science and Culture* is the institutional hub for scientists, educators, and inquiring minds who think that nature supplies compelling evidence of intelligent design. We support research, sponsor educational programs, defend free speech, and produce articles, books, and multimedia content.





Director: Stephen C. Meyer

Managing Director: John G. West

Associate Director: Casey Luskin

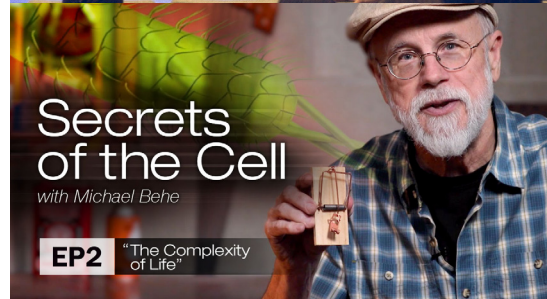
Website: discovery.org/id

Email: cscinfo@discovery.org

INFORMED SCIENTISTS AND SCHOLARS

Information drives the development of life. But what is the source of that information? For two decades, the Center has pioneered the theory of intelligent design, showing from scientific evidence that purposeful information is discernible in the universe, in the world, and in life itself. We are no accident.

The Center supports and promotes over forty affiliated scientists and scholars representing disciplines such as physics, astronomy, chemistry, molecular and cellular biology, biochemistry, microbiology, mathematics, history and philosophy of science, law, and political science. The Center's research is uncovering complexity and information from the highest heavens to the lowliest bacteria.

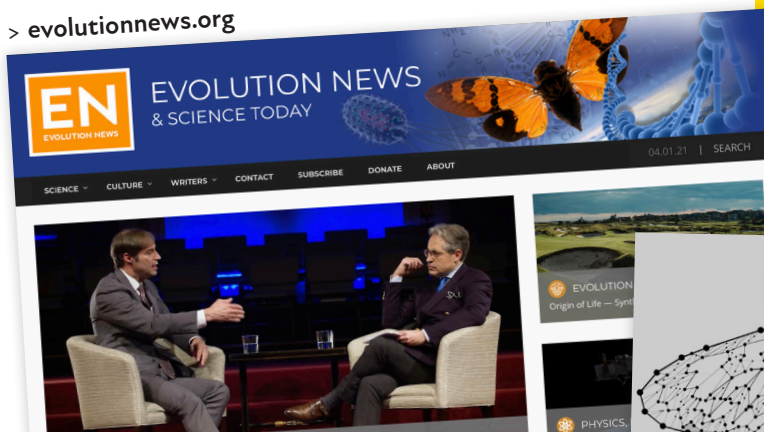


INFORMING SCIENCE AND CULTURE

For more than 25 years we have informed public dialogue and shaped the conversation about our origins. We've made breakthroughs, headlines, films, bestsellers, and have educated a new generation of scientists and thinkers.

This formative work continues with **student seminars** to mentor future leaders in the natural and social sciences. we provide **curriculum** for private schools and families. **News and analysis** breaks daily at *Evolution News*. The ID the Future **podcast** features cutting edge conversations. Our **Videos**, talks, animations, and series go viral at YouTube. **Documentaries** are distributed to schools, families, and educational and commercial television. **Resources** for students, pastors, and scholars integrate **science and faith**. We **network** scientists and cultivate a **grassroots** movement of activists.

> evolutionnews.org



> intelligentdesign.org



THE
Walter Bradley
CENTER *on*
NATURAL &
ARTIFICIAL
INTELLIGENCE

bradley.center

MISSION

The mission of the *Walter Bradley Center for Natural and Artificial Intelligence* at Discovery Institute is to explore the benefits as well as the challenges raised by artificial intelligence (AI) in light of the enduring truth of human exceptionalism. People know at a fundamental level that they are not machines. We put machines (especially computers and AI) in proper perspective.





The *Walter Bradley* Center for
**NATURAL & ARTIFICIAL
INTELLIGENCE**

Director: Robert J. Marks II

Website: bradley.center

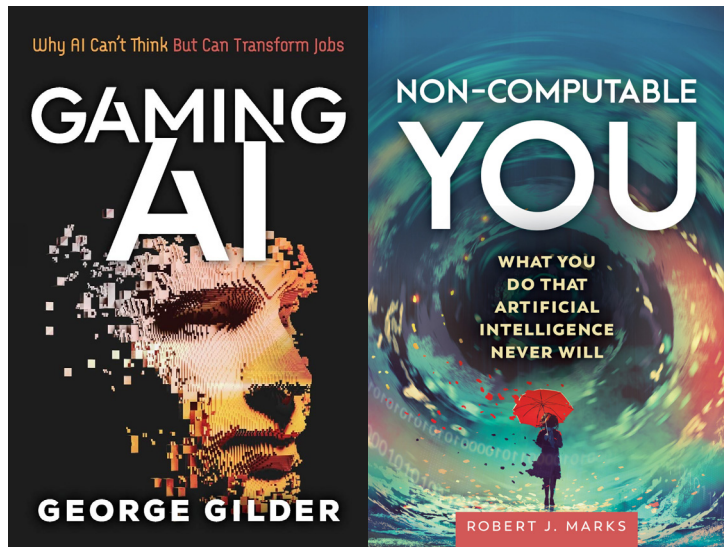
Email: cnai@discovery.org

INFORMED THINKERS

The Bradley Center provides an informed voice for common sense in popular discussions over AI, challenging both the utopians who think smart machines will be our savior, and the dystopians who think machines will inevitably replace us. We communicate and collaborate through social media, podcasts, videos, and events. At *MindMatters.ai* and the COSM technology summit, we provide a platform for human intelligence.

INFORMING TECHNOLOGY

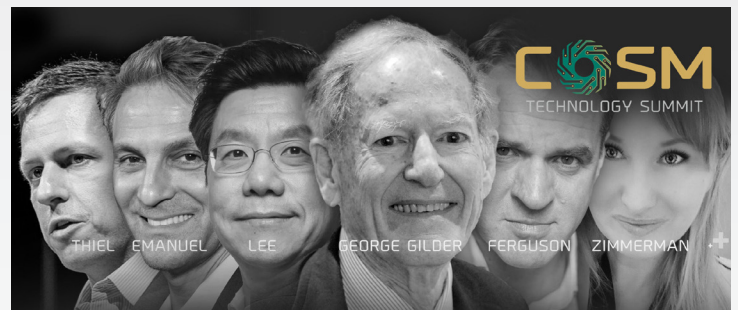
We commission, fund, and disseminate articles, podcasts, books, monographs, and white papers that advance the Center's main



themes and goals. We promote collaboration among scholars concerned with the distinction between natural and machine intelligence, and especially its implications for the future of meaningful human work. Participants include credentialed professionals with doctorate degrees in computer science, computer engineering, neurosurgery, neuroscience, economics, philosophy and electrical engineering.

COSM TECHNOLOGY SUMMIT

With technologist and futurist George Gilder at the helm, each Fall the Center hosts a conference in Seattle to stimulate debate and deliberation amongst industry leaders. > cosm.world



MIND MATTERS NEWS AND PODCAST

A technological landscape dominated by algorithms is taking form before our eyes every day. With cutting edge news and analysis, some thirty highly qualified thinkers anticipate these changes to ensure that technology enhances, not diminishes, human flourishing. > mindmatters.ai



CENTER for WEALTH & POVERTY

wealthandpoverty.center

MISSION

The mission of Discovery Institute's **Center on Wealth & Poverty** is to connect the practical truths of economics with the perennial truths of ethics. We are building a sustained and accessible defense of free enterprise, entrepreneurship, and stewardship in the moral categories consonant with most Americans.





THE Center ON WEALTH & POVERTY

Chair: George Gilder

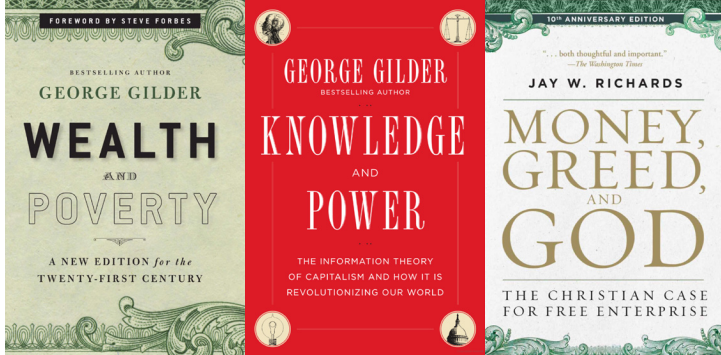
Website: wealthandpoverty.center

Email: cwp@discovery.org

INFORMED ECONOMISTS

Information theory is at the root of George Gilder's visionary work in economics: "entrepreneurs ... resolve uncertainty with information. Disturbers of equilibrium, disruptors of order, they infuse new energy and productive knowledge into the system."

The Center's regard for persons as endowed with freedom, rationality, and responsibility undergirds a positive and moral vision for social and economic policy. Its high view of human potential guides its work in fixing homelessness.



INFORMING INNOVATION

The Center provides a multifaceted defense of the practical and moral necessity of personal agency and free markets through the publication of **books, articles, and research** by Institute scholars.

We foster a discussion of current events and issues in economics, public policy, and culture at **Wealth and Poverty Review**.

At fixhomelessness.org, we champion options for addressing the epidemic of homelessness by uplifting disaffected and drug addicted individuals to their full potential.

We engage the academic, business, student, and faith communities about the free enterprise system through **public lectures and debates** held nationwide.

We lead a **summer seminar program** to inspire, train, and mentor young leaders in business, politics, and religion.



CENTER on HUMAN EXCEPTIONALISM

discovery.org/human

MISSION

The *mission* of Discovery Institute's *Center on Human Exceptionalism* is to affirm and uphold the intrinsic nature of human dignity, liberty, and equality. In resistance to a growing movement against unique human personhood, we aim to revitalize a commitment to the traditional Western view of human rights and responsibilities — both of which are summed up by the term *human exceptionalism*.



HE



SENATE COMMITTEE ON HEALTH & HUMAN SERVICES



INFORMED BIOETHICISTS

Each human person is unique and priceless, wonderfully formed in their mother's womb and also destined to depart this mortal world. We examine a constellation of issues related to humanity's exceptional role amongst all living things. These include the ethical challenges posed by assisted suicide, euthanasia, biotechnology, cloning, radical environmentalism, human trafficking, the dangers of transhumanism, and the animal rights movement. We believe in the unique rights and responsibilities of being human.

The Center's team of bioethicists and organizers is both experienced and dedicated to the principles that further human equality, liberty, and prosperity.

BLOG & PODCAST
> humanize.today

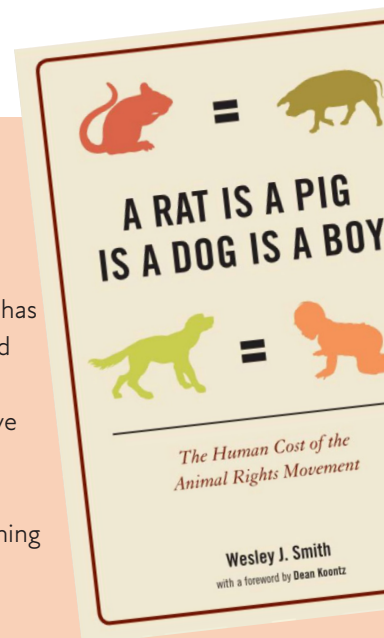


INFORMING AND HUMANIZING

To inform policy and humanize the culture, we serve as a resource to the media, opinion-leaders, academia, decision-makers, and the general public on the many challenges and opportunities in bioethics. We reach a broad audience through the publication of books, articles, and op-eds, in addition to frequent public lectures, debates, interviews, and a new podcast. We inform state and national lawmakers on related issues, draft sample legislation, and provide testimony before elected bodies.

WESLEY J. SMITH DIRECTOR AND FOUNDER

Wesley is one of America's premier public intellectuals on bioethics. He has appeared on countless television and radio programs, as an expert witness in front of federal and state legislative committees, and has counseled government and business leaders internationally about matters pertaining to bioethics and other issues.



AMERICAN CENTER FOR TRANSFORMING EDUCATION

discovery.org/education

MISSION

Discovery Institute's **American Center for Transforming Education** works with policymakers, parents, educators, business leaders, and stakeholders. We advocate for transformative policies that empower parents, spur innovation, and equip students with the skills, knowledge, and character necessary to thrive as citizens and contributors in their communities in our competitive economy.





American Center for Transforming Education

Chairman: Donald P. Nielsen

Director: Keri D. Ingraham

Website: transformingeducation.center

Email: acte@discovery.org

INFORMED CITIZENS

Central to the mission of education must be the cultivation of informed citizens who are able to flourish in a land of the free. But American education has failed to deliver education for today's information and services economy. Rather, many institutions have become centers not of learning, but of ideological indoctrination. For the sake of the next generation, the American Center works to expand parental options and to transform public education.



American Center for Transforming Education

INFORMING PARENTS

Increasingly, **parental choice is a moral and civic imperative.** Empowering parents with the authority to make decisions in the best interests of their children is crucial to American vitality. Too often parental choice in education is hindered or prevented by financial barriers for families.

We speak to those of whatever party affiliation or background who resonate with arguments about how empowering families is a moral imperative and will yield community and civic benefits beyond the education sphere.

Info: discovery.org/school-choice.

TRANSFORMING SCHOOLS

We advocate for **fundamental changes to our education system** that better prepare students for today's globally competitive marketplace. We work at the state level to improve the quality of teaching, leadership, and governance of our public schools. Through state level reforms, we aim to advance the talent — and boost the performance — of the people who power our education system. These new educators will then lead to the transformation of our schools — with students as the ultimate beneficiaries.



CASCADIA CENTER

cascadia.center

MISSION

Founded in 1993, Discovery Institute's **Cascadia Center** provides leadership in regional transportation by promoting sustainable development. The Center is home of the **ACES Northwest Network**, a unique collective supporting the adoption of Automated, Connected, Electric, and Shared technologies in mobility, logistics, and energy.





Director: Bruce Agnew

Associate Director: Scott O. Kuznicki, P.E.

Website: cascadia.center

Email: cascadia@discovery.org

INFORMED CASCADIANS

Our Cascadia region's commitment to transportation and development spans the Cascadia Corridor from Oregon to Puget Sound to Prince William Sound, supported by a deeply-informed population and energetic leadership on action to secure our future.

Since 1993, Bruce Agnew has been leading the initiative director of the Center in Seattle. In 2009, Seattle Magazine named him "Road Warrior" for his transportation initiatives, including advocacy of a deep bore tunnel for the Alaska Way Viaduct Replacement, innovative infrastructure financing, passenger rail, and ferry system electrification and expansion. Bruce was also awarded the "Smashed Brick" by the Canadian Consul General in 2008 for reducing barriers to cross-border trade and tourism.

Since 2017, he has served as the Director of the ACES Northwest Network, joined in 2020 by Associate Director Scott Kuznicki.



INFORMING TRANSPORTATION

Everyone's lives today and in the future are unavoidably shaped by the transportation infrastructure in their city or county. Cascadia has taken the initiative to improve the efficiency and sustainability of traveling and transport in the northwest.

The ACES Northwest Network is a unique collective working to bring **Automated, Connected, Electric, and Shared** (ACES) vehicle technologies to the Puget Sound region.

ACES NORTHWEST NETWORK

The ACES Northwest Network is a unique collective supporting the adoption of ACES technologies throughout Cascadia. Cofounded by industry leaders Tom Alberg and Bryan Mistele, this growing Network of diverse affiliates is developing opportunities to deliver robust mobility services, strengthen our reliable energy ecosystem, and promote visionary care for the environment and the people of Cascadia. Supporting members and partners of the Network bring perspectives from British Columbia, Washington State, and Oregon, pooling the expertise of people who develop, test, deploy, and optimize the entire world of ACES applications and implementations, from infrastructure to software and beyond. > acesnorthwest.network

Chapman CENTER *for* CITIZEN LEADERSHIP

chapman.center

MISSION

Discovery Institute's *Chapman Center for Citizen Leadership* enables young leaders to consider the foundational ideas of leadership in a free society by connecting them with mentors and fellow young leaders through seminars, lectures, and fellowship programs. Our goal is to develop the next generation of public and private sector leaders, in the spirit of collegiality and non-partisan cooperation.





Chapman Center for Citizen Leadership

Director: Bruce Chapman

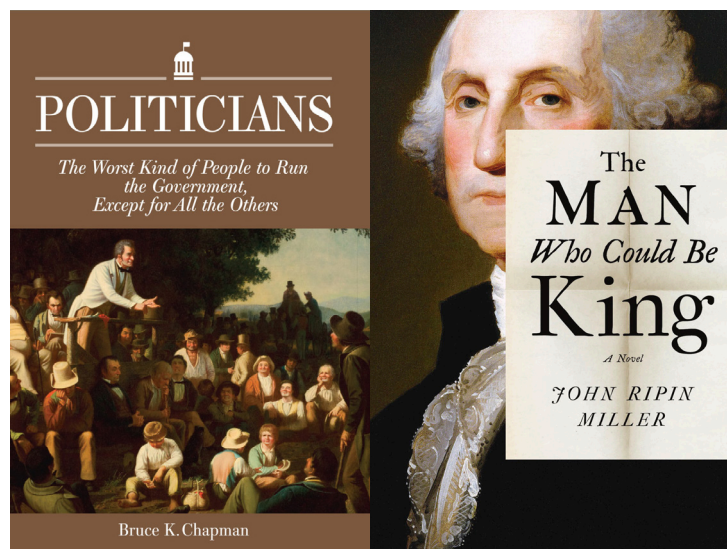
Website: chapman.center

Email: cccl@discovery.org

INFORMED LEADERS

In politics there is no imagined distinction between facts and values. Politicians must be simultaneously informed by principles, reasons, and facts. The Chapman Center is designed to form young leaders in the fields of business, politics, law, education, media, the arts, and religion who want to be involved in a lifetime of service to their communities.

Experience is the principal school of politics. The Center is named in honor of **Bruce Chapman**. He founded Discovery Institute in 1990 and had a long career in American politics and public policy at the city, state, national, and international levels.



INFORMING POLITICS

Politicians may be “the worst kind of people to run the government, except for all the others.” To form better leaders and a more perfect union, the Center’s year-long Fellowship hosts formative events for a select group of young professionals and students from Washington State.

In his public service, former Discovery board member and U.S. Senator Slade Gorton was a model to future generations. **The Gorton Lecture Series** has featured public servants like former EPA administrator William Ruckelshaus and former state legislator and author Mary Ellen McCaffree.

BRUCE CHAPMAN

Elected to the Seattle City Council and as Washington State’s Secretary of State, he also served in several leadership posts in the Reagan administration, including as ambassador. Today he serves as Chairman of the Board for Discovery Institute and director of the Chapman Center on Citizen Leadership.

The Chapman Center for Citizen Leadership draws lessons from this storied career and seeks to instill them in the next generation of public policy and community leaders.





GEORGE GILDER

Reflections on the **MISSION** of **DISCOVERY** **INSTITUTE**

I helped Bruce Chapman form Discovery Institute decades ago and over that period, if I may use the term, it has evolved.

Bruce and I believe that this evolution expresses an intelligent design, a unified vision that transcends the various programs at Discovery Institute. We do not only believe in intelligent design in the universe; we believe such a design manifests itself across the sciences and pervades economics and culture. Not only is God the creator; but human beings are creative in his image, in the image of the creator. This is a scientific proposition, following the insights of a great new science called information theory. Information theory upholds the idea of a hierarchical universe and underlies all the programs at Discovery.

In his essay “Transposition,” C.S. Lewis explained a crucial principle of information theory. Imagine, he said, you are a figure in a great landscape painting, living in a flat world. You occupy just two dimensions. You have worked out all the distances and colors and shadings, shadows and light patterns, textures and angles. You have analyzed all the oils and pigments. You have collected all the data in your flat world and you believe you have a satisfactory 2D explanation of reality.

If an outsider comes to you and tells you that this picture is only a attenuated reflection or pale imitation of a vast three- or even four-dimensional cosmos beyond it, you might answer: “Three dimensions? I have no need for that hypothesis.”

But as C.S. Lewis put it: “What is happening in the lower medium can be understood only if we know the higher medium.”

In his essay, I believe, Lewis refuted what I call the flat universe

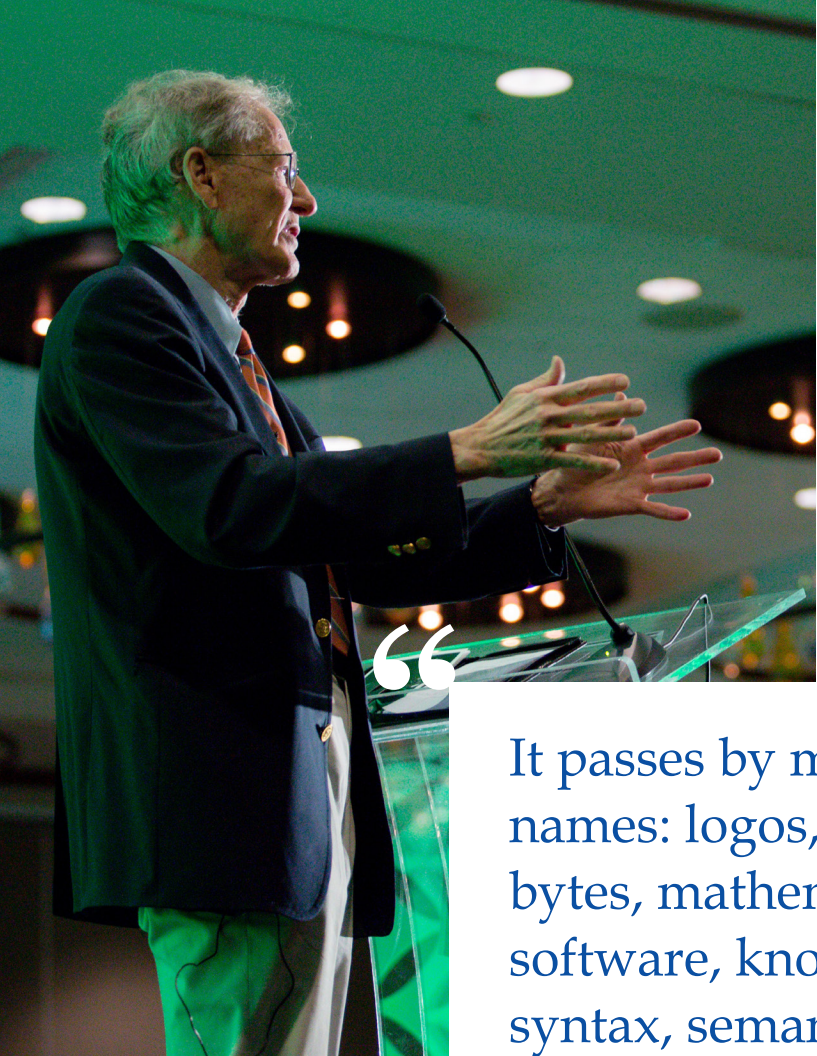
theory. This is the assumption that mind, creativity, consciousness, and creation are all merely chance or emergent results of material forces: physics and chemistry.

Physics applies ever larger energies to matter in order to find ever smaller particles, until at last they isolate the least of all, the Higgs boson, and call it God: the God particle.

Biologists reduce the human body to merely a mix of physical and chemical elements. Thus they stultify pharmacology with a random model of discovery by trial and error among astronomical numbers of molecules that they then inject first into rats and then into humans. Discovery focuses on the creative possibilities of the trillions of ribosomes in every human body that can assemble any needed molecule.

Economists not only deny creativity to the divine; they also deny it to human beings. Their economic models reduce the human agent to a function of outside forces, essentially a Skinner box of stimuli and responses. Focusing on incentives rather than creativity, many economists are left with a model of capitalism that is driven by greed rather than by aspiration.

Across the sciences, however, the recent triumphs of information theory uphold a hierarchical universe. In the greatest mathematical discovery of the 20th century, Kurt Gödel in 1931 proved it in his famous incompleteness theorem. Every logical



“

It passes by many names: logos, logic, bits, bytes, mathematics, software, knowledge, syntax, semantics, code, plan, program, design, algorithm, as well as the ubiquitous “information.”

GEORGE GILDER
CO-FOUNDER, DISCOVERY INSTITUTE

scheme, even mathematics itself, is necessarily dependent on axioms outside the scheme that cannot be proved within it. John von Neumann extended this view to the proposition that all computing machines must have outside programmers. No matter how much you know about the material substance of a computer, you cannot grasp what a computer is doing without finding the source code.

The computer offers an insuperable obstacle to Darwinian materialism. In a computer, as information theory shows, the content is manifestly independent of its material substrate. No possible knowledge of the computer's materials can yield any information whatsoever about the actual content of its computations. In the usual hierarchy of causation, they reflect the software used to program the device; and, like the design of the computer itself, the software is contrived by human intelligence.

Yet Darwinians were upholding a purely material explanation of the complexity of life that could not even explain the complexity of computation. As I pondered this materialist superstition, it became increasingly clear to me that in all the

sciences I studied, information comes first, and regulates the flesh and the world, not the other way around. In the beginning was the Word, as St. John wrote, is a central dogma of modern science.

Salient in virtually every technical field — from quantum theory and molecular biology to computer science and economics — is an increasing concern with the word. It passes by many names: logos, logic, bits, bytes, mathematics, software, knowledge, syntax, semantics, code, plan, program, design, algorithm, as well as the ubiquitous “information.” In every case, the information is independent of its physical embodiment or carrier.

This reality expresses a key insight of Francis Crick, the Nobel laureate and co-author of the discovery of DNA. Crick's “Central Dogma” of molecular biology shows that influence can flow from the DNA word to the protein flesh, but not from proteins to DNA. By asserting that the DNA message precedes and regulates the form of the proteins, and that proteins cannot specify a DNA program, Crick's Central Dogma unintentionally recapitulates St. John's assertion of the primacy of the word over the flesh.

Similarly, you cannot understand mind by pondering physics and chemistry; you need the source codes of DNA and the cosmos. You cannot understand economics without explaining entrepreneurial creativity.

To grasp reality you have to look up rather than down. You have to aspire rather than despair or deny. You have to seek singularities rather than average them to banalities.

You cannot find anything new from an old place. You cannot have an assured path to the future by surveying the landscape in front of you. You cannot find safety in numbers or even in big data.

This attitude of aspiration and creative discovery — vertical ambition for creative meaning rather than horizontal submission to random reductionism — is the heart of the program at Discovery Institute: finding the image of the creator in nature and in us.



DISCOVERY.ORG

Founded in 1991 by Bruce Chapman and George Gilder, Discovery Institute is a non-profit, non-partisan organization focused on research, education, action, and cultural renewal. Headquartered in Seattle, it brings together a growing global network of scholars, scientists, and policy experts.

The Institute investigates the life-changing possibilities of a universe brimming with information and intelligent design. It has a special interest in exploring how science and technology can advance free markets, propel new discoveries, illuminate public policy, and support human dignity and the metaphysical foundations of a free society.

The Institute sponsors research in the sciences, humanities, and public policy. It organizes conferences, seminars, and educational programs for both young people and adults. It produces and disseminates books, articles, reports, and a wide array of multimedia content designed to inform the public.

Join us, and together we can change the world.



(206) 292-0401
info@discovery.org
208 COLUMBIA STREET
SEATTLE, WA 98104



DISCOVERY
INSTITUTE